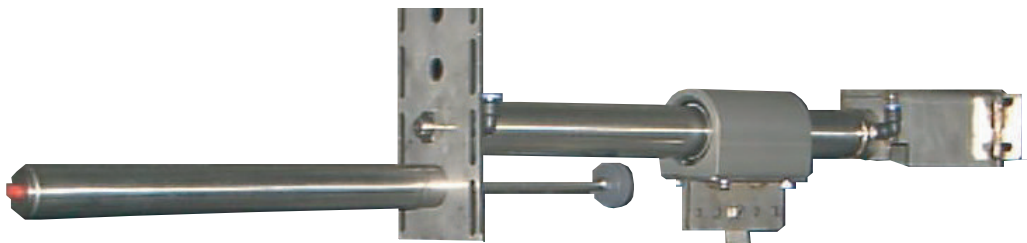




MAGNAGLIDE AIR OPERATOR *HORIZONTAL MOUNT*

INSTALL GUIDE ● TROUBLE SHOOTING GUIDE ● MAINTENANCE MANUAL

AIRLIFT DOORS,™ INC. ▲ 4700 OSSEO ROAD ▲ MINNEAPOLIS, MN 55430
TOLL FREE: 888-368-4403 ▲ WWW.AIRLIFTDOORS.COM



MAGNAGLIDE HORIZONTAL MOUNT

2" STAINLESS STEEL CYLINDER



MAGNETICALLY COUPLED PISTON

WONT JUMP DOOR CABLES

30% MORE POWER THAN ANY OTHER AIR OPERATOR

3 YEAR WARRANTY

FEWER WEAR PARTS

LIGHTWEIGHT—EASY TO INSTALL

ALL STAINLESS STEEL TUBE AND HARDWARE

INSTALLATION GUIDE FOR MAGNAGLIDE AIR OPENER

(IMPORTANT: READ ALL INSTRUCTIONS BEFORE INSTALLATION)

PRE INSTALLATION INSPECTION:

- 1) Test the door for proper balance and smooth operation. If door is not balanced or is binding, the operator will not work properly. Note: counterweights and torsion springs are under extreme pressure and can cause serious injury or death. Adjustments and installation should be performed by a trained professional.
- 2) Check the clearance requirements for your operator. Horizontal mount operators need 4" above the highest portion of the door to the ceiling or the nearest obstruction on the ceiling such as lights, beams, pipes, etc. This measurement is taken with the door in the open position. Vertical mount openers need at least 5" from the side of the track towards the wall for clearance.
- 3) Make sure that you have compressed air available and 110 volt electricity for the air operator control box.
- 4) Check the packing list (included in your hardware box) for all necessary parts. Notify Airlift Doors immediately if anything is missing. Check your serial #'s stamped on the operator carriage to make sure the serial numbers match those listed on the packing list. Example: MG 104, MG 111, MG 135.

IMPORTANT SAFETY INFORMATION:

- 1) Air openers require high air pressures to operate. Make sure that any time you are installing or servicing your air openers you have the air turned off and all the air is drained out of the cylinders before connecting or disconnecting any air lines. Failure to do so can cause serious injury or death.
- 2) Torsion Springs and Counterweights are under extreme pressure. Do not attempt to install, adjust, or service unless you are a trained professional or are assisted by a trained professional. Do not attempt to service any counterbalance system without the proper tools. Improper handling of counterbalance systems can cause serious injury or death.
- 3) All openers must have safety devices such as electric eyes, reversing edges, etc. Failure to have them installed and working properly can cause serious injury or death. All safety devices must be checked regularly to ensure proper operation. Any damage to persons or objects caused by failure to install safety devices or properly maintain safety devices will not be the responsibility of Airlift Doors.
- 4) Open and close travel speeds can be manually adjusted with all air openers. Airlift Doors strongly recommends setting your close travel speed to a slow and safe travel speed. Closing any door too fast can result in the door closing on persons or objects and can cause serious injury or death.

SPECIFICATIONS FOR MAGNAGLIDE™ AIR POWERED OPENER

Operator Type:

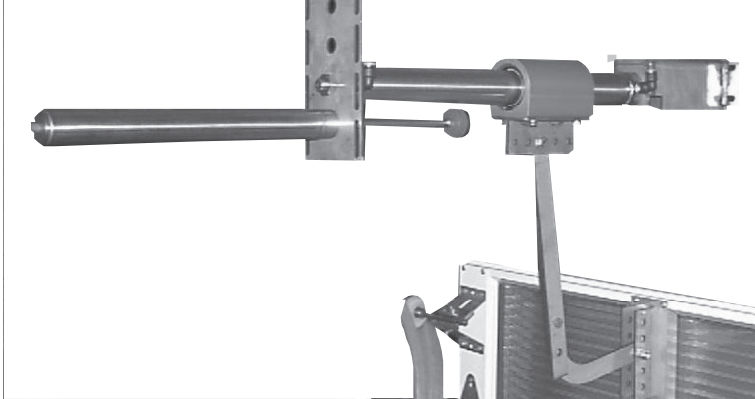
1. MagnaGlide™ Air Powered Opener
 - A. 2" Stainless Steel Tube
 - B. Chainless Direct Drive
 - C. 1/4 npt x 3/8 Poly Airline Fittings
 - D. Stainless Steel Brackets and Fasteners
 - E. Magnetic Coupled Piston to Drawbar Carriage
 - F. Sealed Stainless Steel Shock Absorbing Cylinder
 - G. **Three Year Unlimited Warranty**
 - H. Wiper Seal Built Into Carriage to Prevent Dust Accumulation
 - I. No External Seals
2. Control Box Consisting of the Following
 - A. Automatic Valve (Lifetime Warranty on the Coils)
 - B. 24 VAC Circuitry
 - C. Ten Place Terminal Strip for Easy Electrical Hookup
 - D. Nema 4 Up/Down Buttons on Cover
 - E. Fused Circuitry
 - F. Valve Mounted With Gasket, Not O-Rings
 - G. Fiber Glass Box—Nema 4 Rated
 - H. Noise Mufflers
 - I. Electric Eye Pin Sockets are Pre-Wired

Recommended Upgrades:

- A. Emergency Open Button—Opens the Door in Case of Power Failure
- B. Automatic Oiler—Performs Controlled Oil Drips Into Airlines
- C. Inline Airline Dryer—Eliminates Excess Water and Buildup From Your Compressor

MAGNAGLIDE HORIZONTAL MOUNT INSTALLATION GUIDE

MODEL 1



Step 1) Place the MagnaGlide cylinder on a flat surface and install front bracket (P/N MGH1004). Using a 1 1/8" wrench, tighten the nut and lock washer holding the front bracket to the cylinder. Note: Either end of the cylinder can be the front.

Step 2) Assemble the back hanging bracket to the rear of the cylinder. This assembly consists of two parts (MGH1007 and MG1008). Use only P/N MGH 1007 when you are mounting the cylinder as close to the ceiling as possible. *Note: There are two possible mounting holes for the cylinder on this bracket. Be sure to use the top hole (closest to the ceiling) and save the bottom hole for the stop cylinder.* When you need to extend the cylinder down further from the ceiling, use P/N MG 1008 and attach to P/N MGH 1007. Pick any hole to mount the rear bolt of the cylinder as long as you leave at least one hole below for mounting the stop cylinder.

Step 3) Assemble the pusher spring (P/N MG 1002) to the rear ceiling bracket using the hole immediately below the cylinder hole. Using a 1 1/8" wrench, tighten the nut to hold the cylinder to the bracket. Screw on the grey pusher stop block (P/N MG1003) to the threaded end of the pusher spring.

Step 4) Install 1/4" NPT X 3/8" hose fitting (P/N 35007) in both ends of the cylinder.

Step 5) Close the door and lock the door down. Use a vise grip to lock the door in the down position if it is not equipped with slide lock.

Step 6) Measure the door opening width. Place a mark on the front wall in the center of the opening. The mark should be just above the shaft of the door. This mark should line up with the center style of the door. If the mark is not lined up with a door style, the operator may be moved off center to line up with the style.

Step 7) Set up a ladder at the front of the bay just below your center mark on the front wall. Set up a second ladder in the middle of the bay. The distance between ladders should be very close to the length of your operator. Using two people (one on each ladder) lift the MagnaGlide cylinder up the ladders and mount the front bracket to the wall at your mark. The operator can be mounted to the wall anywhere from 1" to 8" above the door shaft depending on your ceiling height. Use concrete anchors or wood lags to secure the bracket to the wall. Note: Use all four holes to secure the bracket as most of the pressure is applied against this bracket.

Step 8) Holding the operator up, mount the stainless steel ceiling bracket (P/N MGH 1007) to the ceiling using wood lags or concrete anchors.

Step 9) Push the carriage (MGH 1009 on diagram) all the way forward towards the wall. Assemble (P/N PPN 1193, PPN 1194, and PPN 118) as shown in the diagram. Attach (PPN 1188) to the center style of the door using self-tapping bolts. Part (PPN 1188) must be fastened within 6" of the top of the door. Adjust the arm using the provided holes in parts (PPN 1193) and (PPN 1194) to assure that all parts match up.

Step 10) Mount the control box to the wall. Recommended height is approximately 4' off the ground so it is easily accessible. *Note: Control box will need 110 volt power and compressed air run to the box.*

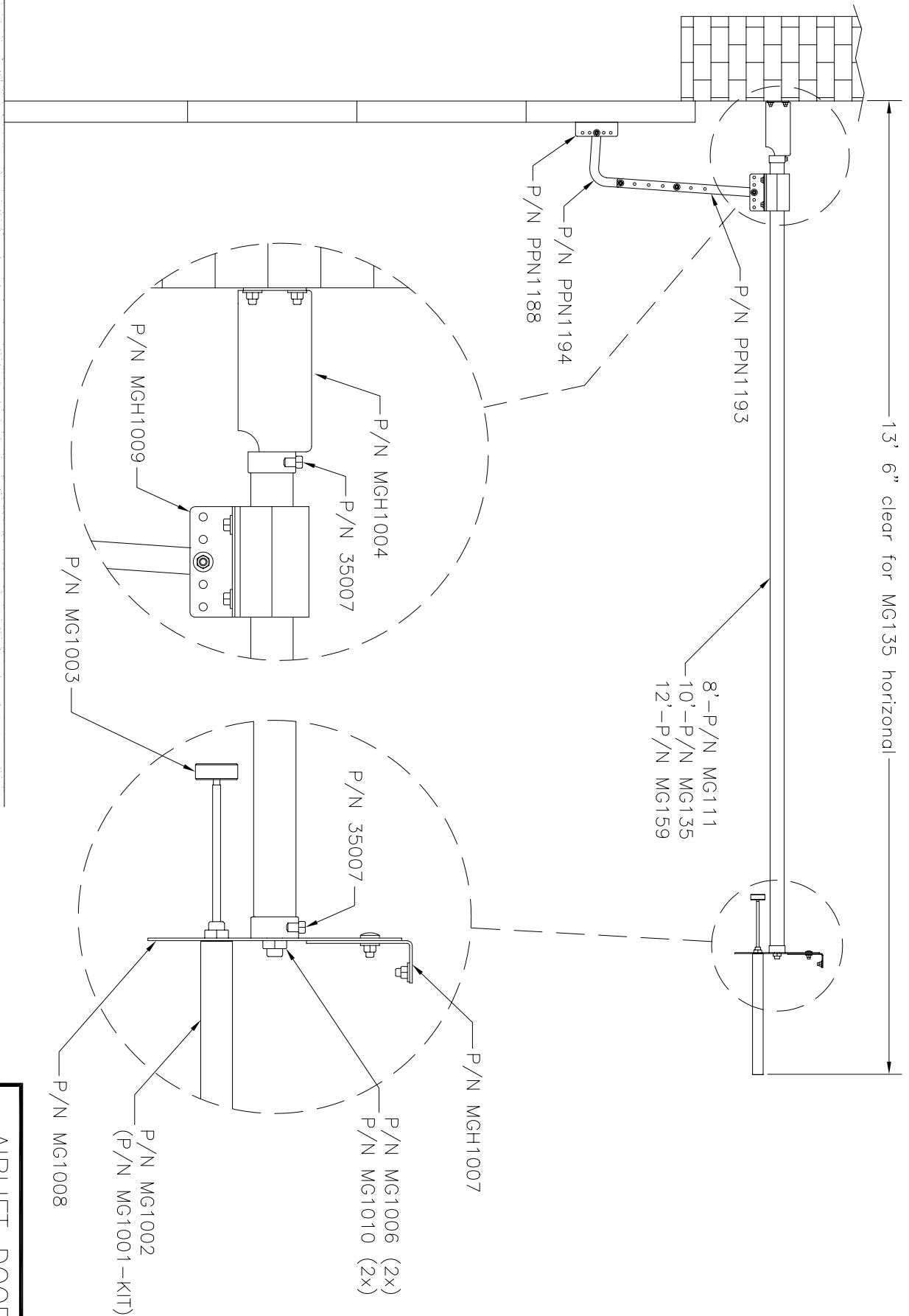
Step 11) Using 3/8" poly air line, run enough line to reach from the control box to the cylinder. The top hole on the right side of the box goes to the front (nearest to the door) fitting of the operator (P/N 35007). The airline from the bottom valve or hole of the control box goes to the air line connection at the rear of the operator. *Note: Both operator and control box have quick connect air line fittings. Once measured and cut to desired length, the ends are connected by just pushing them into the fitting. Lines can be removed by holding the end of the fitting in while pulling on the air line.*

Step 12) Once all your connections are made you can charge the air line from your compressor to your regulator. You can adjust your air pressure through the top knob on your regulator. By lifting the top knob and turning the knob, you can increase or decrease your air pressure. To decrease air pressure you should turn the knob counter-clockwise. To increase your air pressure, you should turn the knob clockwise. To start, you should set your gauge to read 40 lbs of air pressure. If your door opens too slowly, turn your air pressure up. Note: You should never exceed 80 p.s.i. If door will not operate under 80 P.S.I. you have a mechanical problem and should check over all door hardware.

Continued on next page

Step 13) You can easily adjust the speed of the door by using the flow controls located on the side of the operator control box. There is an exhaust port on top of the main air intake line as well as one on the bottom. The bottom flow regulator controls the speed of the open travel while the top flow regulator controls the speed of the down travel. The speeds of either travel can be adjusted by turning the flow regulator clockwise to slow the door down or counterclockwise to speed it up. *NOTE: It is very important to have your door close at a very slow and safe operating speed. Failure to do so can result in the door striking objects or persons and may result in serious injury or death.*

See control box features diagram for reference to Step 13.



13' 6" clear for MG135 horizontal

8'-P/N MG1111
10'-P/N MG135
12'-P/N MG159

P/N PPN1193
P/N PPN1194
P/N PPN1188

P/N MGH1004
P/N MGH1009
P/N MG1003

P/N MG1007
P/N MG1006 (2x)
P/N MG1010 (2x)
P/N MG1002 (P/N MG1001-KIT)
P/N MG1008

AIRLIFT DOORS

4700 OSSEO RD ~ MPLS, MN 55430
(612) 529-1000 PHONE
(612) 588-7660 FAX

PART NAME:
MAGNAGLIDE DOOR OPERATOR
- HORIZONTAL

ASSEMBLY NUMBER:
MGH1

DRAWING DATE
7/3/02

Rev notes:
B. changed P/N 35007 for both ends and changed bracket 1004 to single pc.
3/7/03

THIS DOCUMENT CONTAINS INFORMATION WHICH IS PROPRIETARY TO AIRLIFT DOORS. NO REPRODUCTION OR PUBLICATION OF THIS DOCUMENT OR IT'S CONTENTS, IN WHOLE OR PART, SHALL BE MADE WITHOUT THE WRITTEN CONSENT FROM AIRLIFT DOORS.

REV:
B

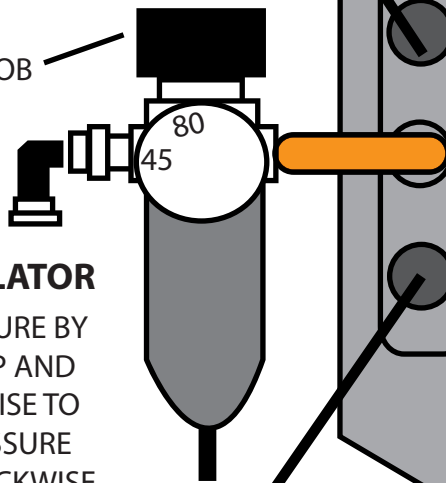
CONTROL BOX FEATURES

(ADJUSTMENT FOR OPEN AND CLOSE TRAVEL SPEED)

DOWN TRAVEL SPEED CONTROL.

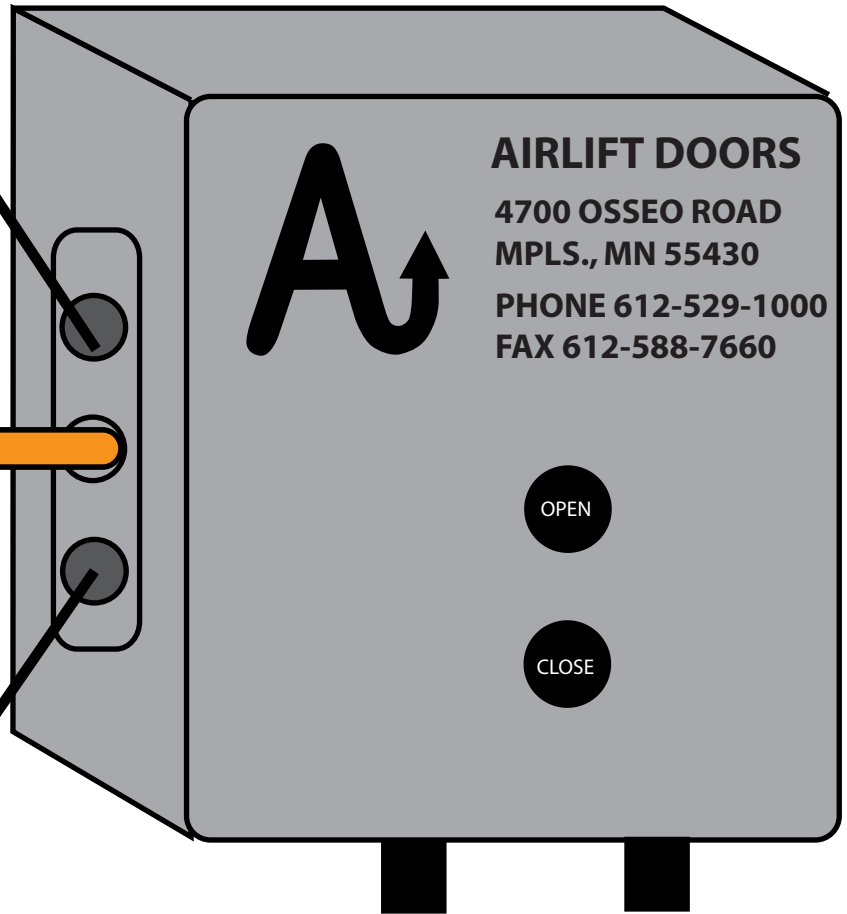
DOWN TRAVEL SPEED SHOULD BE SET TO A VERY SLOW SPEED. FAILURE TO DO SO GREATLY INCREASES THE RISK OF VEHICLE DAMAGE OR PERSONAL INJURY!

ADJUSTMENT KNOB



AIR FILTER REGULATOR

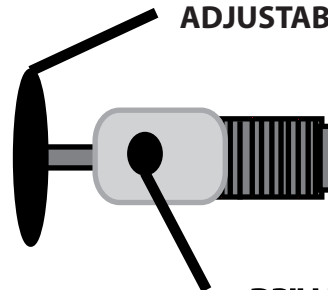
ADJUST AIR PRESSURE BY PULLING KNOB UP AND TURNING CLOCKWISE TO INCREASE AIR PRESSURE AND COUNTERCLOCKWISE TO DECREASE AIR PRESSURE. (OPERATE BETWEEN 45-80 P.S.I.)



OPEN TRAVEL SPEED CONTROL.

TURN BLACK KNOB CLOCKWISE TO DECREASE OPEN TRAVEL SPEED OR COUNTER CLOCKWISE TO INCREASE OPEN TRAVEL SPEED.

ADJUSTABLE FLOW CONTROL



DRILLED EXHAUST PORT



AIRLIFT DOORSTM, INC.
4700 OSSEO ROAD
MINNEAPOLIS, MN 55430

TOLL FREE: 888-368-4403
WWW.AIRLIFTDOORS.COM
INFO@AIRLIFTDOORS.COM

Trouble Shooting For MagnaGlide Air Powered Openers

Scenario: The operator is sliding with jerky motions

Solution: Spray WD-40 or JB-80 on the outside of the stainless steel tube. Also add oil to the inside of the cylinders to lubricate the piston seals. (See maintenance guide for details)

Scenario: Door opens too slowly

Solution: Check the air pressure. The pressure should be between 40 and 80 p.s.i. If the air pressure on the regulator gauge reads o.k., then adjust the flow control on the side of the control box. Note: There are two flow controls in the box. The bottom flow control adjusts the open travel speed. To speed up the travel, turn the flow control counterclockwise a full turn and test the door. Repeat until door operates at desired speed.

Scenario: Door closes too fast or slow

Solution: See steps to above scenario. Note: Top flow control adjusts the down travel speed.

Scenario: Door goes down when you push the up button or vice versa

Solution: Switch the airlines coming out of the right side of the control box

Scenario: Door does not sit level on the ground

Solution: This is not an operator problem. Check your door cables to make sure they have not slipped off of the drum.

Scenario: Door does not shut all the way to the floor

Solution: Adjust the length of your drawbar arm by removing the bolts holding the straight piece and the 90 degree bend and placing them in new holes.

UNLIMITED

Three Year Warranty Certificate

MagnaGlide

All Models

Three Year Warranty

Airlift Doors, Inc. warrants to the original purchaser or original user that all MagnaGlide Operators sold by Airlift Doors, Inc. and all parts thereof are free from defects in material or workmanship under normal use and service. The company's sole obligation under this warranty shall be limited to furnishing replacement parts or a complete operator F.O.B. Minneapolis, Minnesota for 36 Months from date of shipment by Airlift Doors, Inc.

If the MagnaGlide operator has been proven to be inoperative due to defects in material or factory workmanship, a rebuilt operator will be provided to original purchaser in exchange. The original warranty date will continue on with exchange operator.

General Conditions

The warranties set out in this certificate are the exclusive remedy of the original owner or user in lieu of all other warranties written, oral or implied (including any warranty or merchantability or fitness for the purpose) and all other obligations or liabilities on the part of the Company, and the Company neither assumes nor authorizes any person to assume for it any other obligation or liability in connection with the sale, installation or use of the MagnaGlide Operator or any parts thereof.

The Company will not be responsible for labor or shipping and handling charges for the analysis of a defective condition or for the replacement and installation of defective parts.

The warranties herein shall be null and void if the MagnaGlide Operator is not installed by a competent contractor and/or if MagnaGlide Operator is not installed according to Company instructions.

The warranties herein shall be null and void if the MagnaGlide Operator is subjected to misuse, frozen, negligence, accidental, or physical damage.

Airlift Doors, Inc.TM

4700 Osseo Road

Minneapolis, MN 55430

1-888-368-4403

INFO@AIRLIFTDOORS.COM

MAGNAGLIDE MAINTENANCE GUIDE AND SCHEDULE

JAN FEB MAR APR MAY JUN JUL AUG SEP OCT NOV DEC

A. Check Air Regulator (monthly)												
B. Check Flow Controls (monthly)												
C. Clean Cylinder (1-2 months)												
D. Add Oil To Cylinder (2 months)												
E. Drain Compressor (monthly)												

INSTRUCTIONS TO PERFORM MAINTENANCE

A. Check the air regulator for proper flow. The pressure gauge should be between 45 psi. and 80 psi. If air pressure exceeds 80 psi. to operate the door contact your service provider to determine cause of resistance.

B. Check your flow controls located on the valve exhaust ports located on the side of your control box. Test open and close travel speeds. The top metering screw adjusts the closing speed. The bottom screw adjusts your opening speed. It is highly recommended that you have your door close slowly to prevent damage or death to person or vehicle.

C. Clean your cylinder with a non abrasive cloth and a cleaning solution. WD-40, JB-80, or any other non stick agent works best. Do not use grease or oil on the outside of the cylinder. The carriage of your operator has a built in wiper seal that will remove any buildup on the cylinder and oil or grease will cause excess buildup counteracting its performance.

D. Airlift strongly recommends automatic oilers with your operator. An automatic oiler will release a gradual flow of oil to keep the inside piston seals lubricated. One drop per cycle is the recommended setting for your automatic oiler. If you do not use an oiler it is very important to add oil on a regular basis (every two months). If you do not use an automatic oiler, follow these instructions for the type of operator you have. If you have a **horizontal mount** operator run the door to the closed position. Remove the front air line from the push fitting (closest to the wall) and add 6-10 inches of oil in the line. Push the airline back into the fitting and run the door to the open position. Remove the back airline and add oil to the line and replace into fitting. Cycle door. With a **vertical mount** operator place 6-10 inches of oil into the bottom airline when the door is in the closed position. Replace airline and open door. Add oil into the top fitting with door open, replace into fitting and cycle door. Use Airlift cylinder lubricant or contact factory for recommendations. Once all steps are completed, cycle your door multiple times to ensure the seals are properly oiled.

E. You should drain your compressor as often as possible. However, with any pneumatic system it is impossible to remove all water from lines. In addition to regular compressor draining, Airlift recommends using an inline air dryer to eliminate water built up from condensation from entering into your operator.

AIRLIFT DOORS, INC.TM-----4700 OSSEO ROAD-----MINNEAPOLIS, MN 55430
TOLL FREE: 1-888-368-4403-----FAX: 612-588-7660-----E-MAIL: INFO@AIRLIFTDOORS.COM